

**Buttplate, brass or nickel silver ..... #BP-K-4-B or S**

This wide early buttplate may be Lebanon County style or possibly a Lancaster or similar school of style. Sand castings require polishing. Select brass or nickel silver.

- #BP-K-4-B sand cast yellow brass **only \$14.50**
- #BP-K-4-S sand cast nickel silver **only \$15.50**

©2012, Track of the Wolf, Inc.

**shown actual size**

Made in the U.S.A.

**Buttplate, brass or nickel silver .....#BP-K-5-B or S**

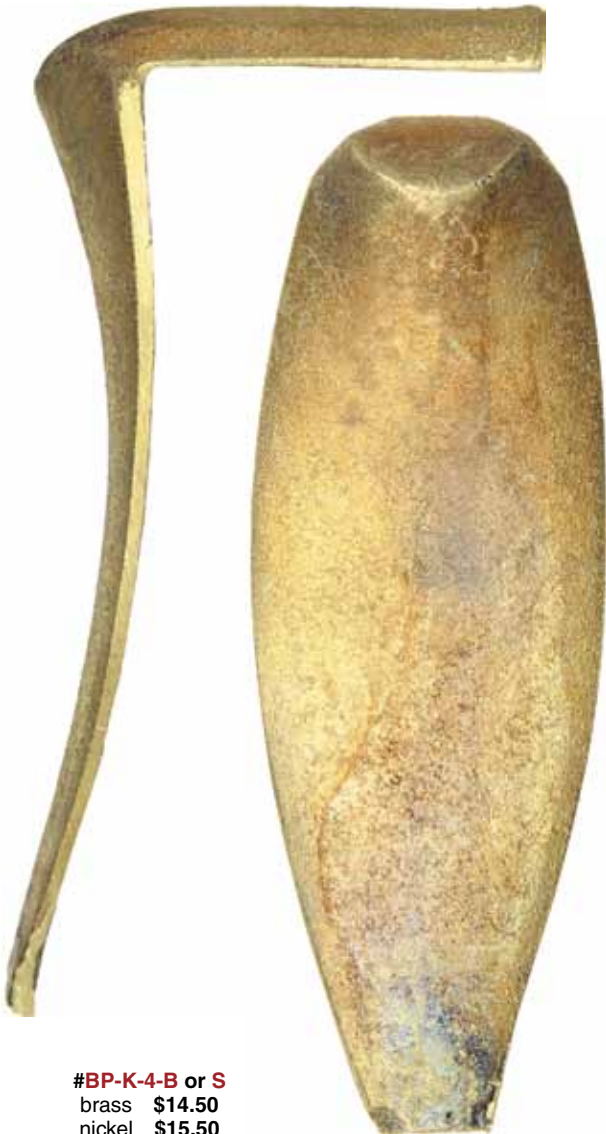
A wide, straight buttplate used on many early longrifles.

- #BP-K-5-B sand cast yellow brass **only \$14.50**
- #BP-K-5-S sand cast nickel silver **only \$15.50**

**Buttplate, brass or nickel silver .....#BP-E-62-B or S**

An early buttplate with angular features in the style of Isaac Haines, an important Lancaster County maker.

- #BP-E-62-B sand cast yellow brass **only \$14.50**
- #BP-E-62-S sand cast nickel silver **only \$15.50**



- #BP-K-4-B or S
- brass \$14.50
- nickel \$15.50

- #BP-K-5-B or S
- brass \$14.50
- nickel \$15.50

- #BP-E-62-B or S
- brass \$14.50
- nickel \$15.50