

©2012, Track of the Wolf, Inc.

actual size

Made in the U.S.A.

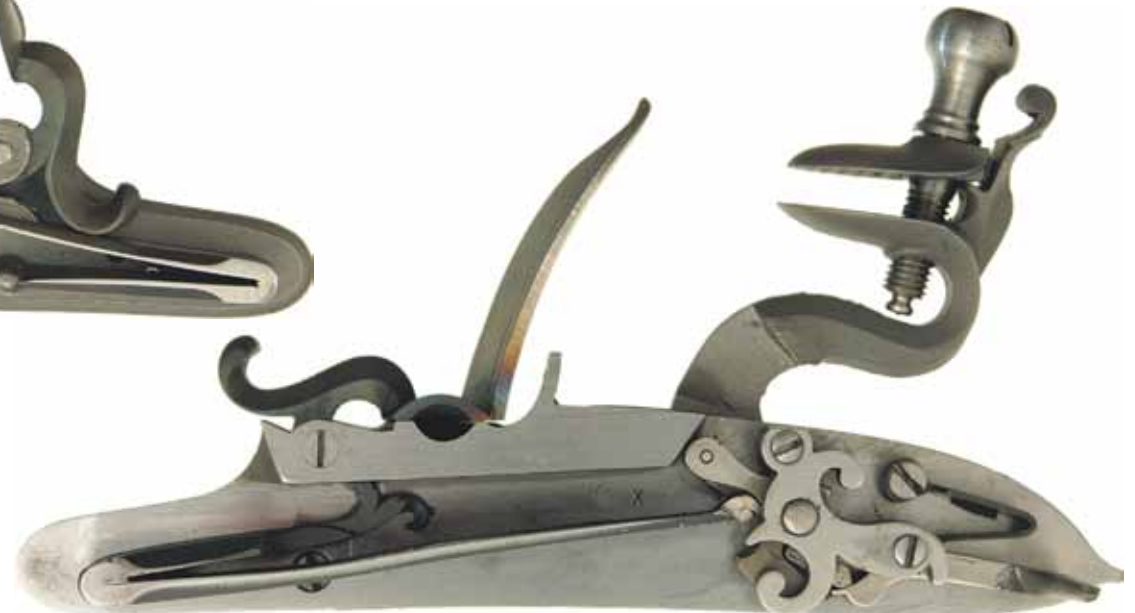
for Track of the Wolf, Inc.

by R.E. Davis.

use 1" Flint-Eng-8



1760 era flint lock by John Twigg famous London maker



John Twigg's 1760 era flint lock #Lock-Twigg

This fine 1760 - 1770 era lock is made in the style of John Twigg. Famous for fowling guns, he made sporting rifles and pistols, too. Twigg's guns are generally very elegant, with minimal decoration. Rather, his eye for graceful architecture, and his use of subtle decorative features, enhanced his guns.

Larger than Siler's large lock, the Twigg lock will work well on your next fowler or rifle. Notice that the cock points directly into the semi-waterproof pan. The fine English styled plate is surrounded by a nice moulding. The cock is large and the tumbler geometry provides enough travel to handle a full 1" gun flint. The roller bearing and frizzen spring ramp give it a smooth action.

The fly detent pivots in the tumbler's fly mortise, preventing the sear from accidentally engaging the half-cock notch when fired. Suitable for use with plain or set triggers. The large lock is ideal for English sporting rifles, fowlers, and English influenced longrifles with barrels 15/16" to 1-1/8" at the breech.

As you cock this lock, you will notice the long swivel link tucks under the tumbler arm, minimizing the trigger effort needed. This gives the lock a light release, increasing in speed through the stroke, due to increasing leverage. The frizzen tightly covers the pan. The mainspring has a floral finial and a smooth snappy action. The tumbler and sear are spaced slightly off the bridle and lock plate's inner surfaces by integral bearings. This "frictionless" design became a popular feature on later English locks.

Designed by John Twigg of London, about 1760. Assembled and tuned by R. E. Davis Company.

We stock the full line of spare parts, if ever needed. Most parts are machined and tempered, ready to install. Contact us if you need warranty repair service, or warranty replacement parts for your R. E. Davis flint lock. Wax cast parts can contain hidden flaws, that fail after very short use. If your lock will fire 100 shots, it will probably last a lifetime. If not, call on Track to arrange the warranty service you may need.

#Lock-Twigg John Twigg's 1760 flint lock **only \$139.99**

Parts for John Twigg's 1760 era flint lock.....#Lock-Twigg

#Lock-Twigg-Pl	lock plate & pan, 5.68 x 1.03", wax cast	\$22.50
#Lock-Twigg-Fr	frizzen, cut to accept a roller bearing	\$19.99
#Lock-Twigg-Fr	frizzen roller and pin, hardened	\$ 2.99
#Lock-1750-Fx	frizzen screw, inside type, 6-40	\$ 2.99
#Lock-Twigg-Fs	frizzen spring, ramped, for blind screw	\$17.99
#Lock-1750-Fsx	frizzen spring screw, 6-40, inside	\$ 2.29
#Lock-Twigg-Co	flint cock, 1.7" throw, 1/4-28 thread	\$13.99
#Lock-Twigg-Tj	top jaw, .85" x 1.03" oval, with .26" hole	\$ 6.99
#Lock-Twigg-Tjx	top jaw screw, 1/4-28", slotted	\$ 4.50
#Lock-Twigg-Tu	tumbler, tapped 6-40, cut for fly	\$23.99
#Lock-Twigg-Tu	tumbler screw, 6-40, .500" head	\$ 3.99
#Lock-Twigg-Fl	fly detent, long tempered	\$ 8.99
#Lock-Twigg-Br	bridle, as cast, uses two screws	\$ 7.99
#Lock-Twigg-Bx	bridle screw, 6-40	\$ 2.29
#Lock-Twigg-Se	sear, tempered, use 6-40 screw	\$15.99
#Lock-1750-Sx	sear screw, .55" long, 6-40	\$ 2.29
#Lock-1750-Ss	sear spring, tempered	\$ 7.99
#Lock-1750-Ssx	sear spring screw, 6-40 thread	\$ 2.29
#Lock-Twigg-MS	mainspring, tempered steel	\$18.99
#Lock-Twigg-Li	mainspring, stirrup link	\$ 4.99

Gunmaker's Tip:

To add a new level of correct detailing your next replica, invest in our inexpensive hardened steel marking dies, to make correct replica marks on your gun's barrel or lock. Give your gun the look and feel of a fine old gun, with very little additional effort.

To view our every increasing line of small marking stamps, visit our web site: www.trackofthewolf.com.

LONDON

The octagon-to-round barrel of a John Twigg style flint fowling gun might be marked "LONDON" using the above hand stamp. Such marks are sometimes found on the lock plate, also.

Only a few small correct marks are needed to enhance the appearance of your correct replica flint gun. Better too few than too many marks.

Building a special replica longrifle or fowling gun?
#Stamp-London barrel stamp **only \$39.99**