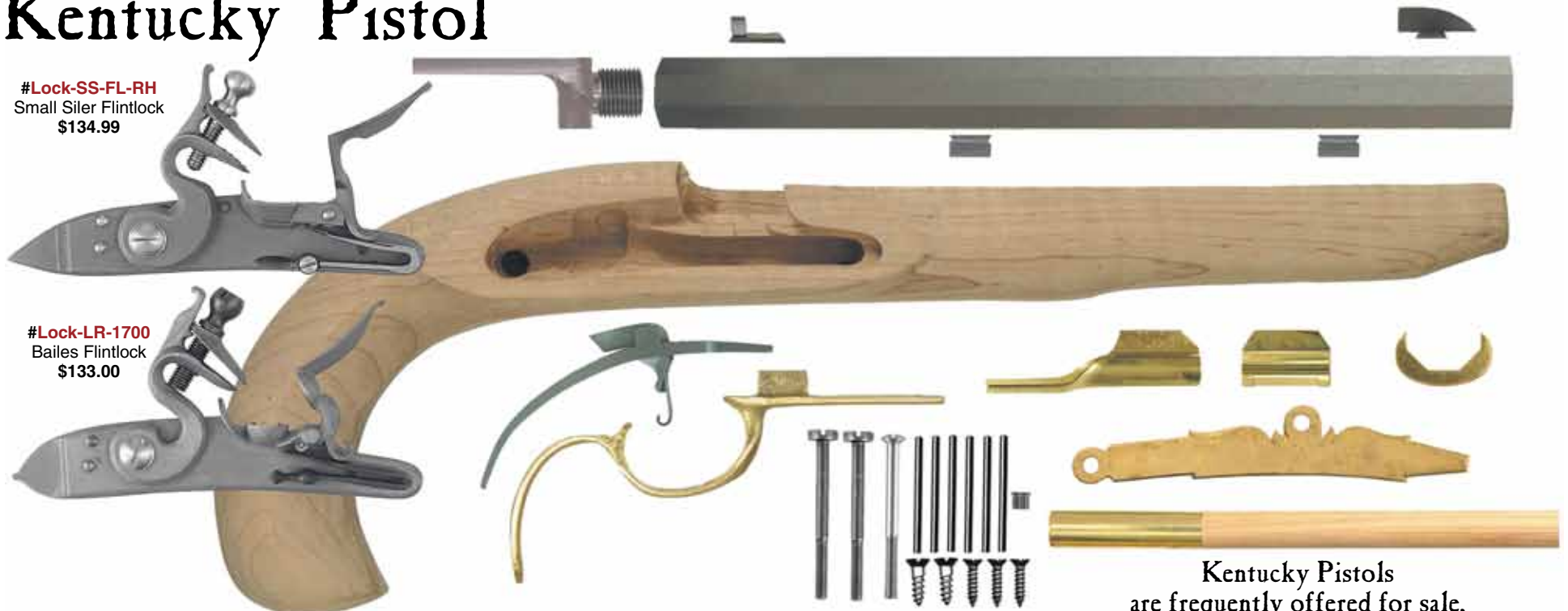


Kentucky Pistol

#Lock-SS-FL-RH
Small Siler Flintlock
\$134.99

#Lock-LR-1700
Bailes Flintlock
\$133.00



Kentucky Pistol kit, with L&R Bailes flint lock:

- #Lock-LR-1700 flint lock, John Bailes right hand. \$133.00
•Order matching cap lock #Lock-LR-1600 for a percussion pistol.
- #Stk-KPL-13-M1 stock, shaped, pre-inlet, maple. \$ 80.00
•Or specify curly maple stock #Stk-KPL-13-M3 at extra cost.
- #GMT-45-A-12 barrel, .45 cal. 13/16" octagon, 12". \$ 64.99
•Or specify your choice of .40, or .45 caliber in 13/16".
- #Labor-CC shorten pistol barrel to match stock \$ 20.00
- #Plug-FT-14-5 plug, 5/8-18 thread, flared tang. \$ 8.99
•We can quickly install the plug, sights, and lugs, at extra cost.
•.32 caliber barrels use a 9/16-18 plug, #PLUG-FT-14-9.
- #TR-Pist-C-TP trigger, with curved plate. \$ 18.99
- #SP-LR-17-B sideplate, brass, for L&R Bailes lock. \$ 14.99
- #TG-MA-19-B triggerguard, sand cast brass. \$ 10.50
- #Ramrod-5-12 ramrod, 3/8" diameter, 12". \$.99
- #RT-5-8-B ramrod tip, 5/16" brass, 8-32 thread. \$ 2.29
- #UL-NW-1 under lug for pin, milled steel, use 2. \$ 1.50
- #RP-TC-PE-5B rod pipe, 5/16", entry, use one. \$ 8.19
- #RP-TC-PF-5B rod pipe, 5/16", forward, use one. \$ 5.40
- #MC-PP-13-B muzzle cap, 13/16" octagon, brass. \$ 7.59
- #FS-G-77-I front sight, high steel blade. \$ 6.99
- #RS-AT-14 rear sight, wax cast steel. \$ 7.99
- #THL-S-4-S vent liner 1/4-28 thread, stainless. \$ 2.99
•Order drum and nipple #Drum-75-FL & #RST-S for percussion.
- #Screw-Set-KP set of unplated screws and pins \$ 9.49
- Kentucky Pistol parts kit, with L&R Bailes flint lock \$396.38**

Kentucky Pistol kit, with Siler's small flint lock:

- #Lock-SS-FL-RH flint lock, small Siler, right hand.\$134.99
•Order matching cap lock #Lock-SS-CL-RH for a percussion pistol
- #Stk-KPS-13-M1 stock, shaped, pre-inlet maple.\$ 70.00
•Or specify curly maple stock #Stk-KPS-13-M3 at extra cost.
- #GMT-45-A-12 barrel, .45 cal., 13/16" octagon, 12". \$ 64.99
•Or specify your choice of .40, or .45 caliber in 13/16".
- #Labor-CC shorten pistol barrel to match stock. \$ 20.00
- #Plug-FT-14-5 plug, 5/8-18 thread, flared tang.\$ 8.99
•We can quickly install the plug, sights, and lugs, at extra cost.
•.32 caliber barrels use a 9/16-18 plug, #PLUG-FT-14-9.
- #TR-Pist-C-TP trigger, with curved plate.\$ 18.99
- #SP-Pist-2-B sideplate, pistol size, brass.....\$ 14.99
- #TG-MA-19-B triggerguard, sand cast brass.....\$ 10.50
- #Ramrod-5-12 ramrod, 3/8" diameter, 12".....\$.99
- #RT-5-8-B ramrod tip, 5/16" brass, 8-32 thread. \$ 2.29
- #UL-NW-1 under lug for pin, steel, use two.....\$ 1.50
- #RP-TC-PE-5B rod pipe, 5/16", entry, use one.....\$ 8.19
- #RP-TC-PF-5B rod pipe, 5/16", forward, use one.....\$ 5.40
- #MC-PP-13-B muzzle cap, 13/16" octagon, brass...\$ 7.59
- #FS-G-77-I front sight, high steel blade.\$ 6.99
- #RS-AT-14 rear sight, wax cast steel.....\$ 7.99
- #THL-S-4-S vent liner 1/4-28 thread, stainless. ...\$ 2.99
•Order drum and nipple #Drum-75-FL & #RST-S for percussion.
- #Screw-Set-KP set of unplated screws and pins.\$ 9.49
- Kentucky Pistol parts kit, with Siler's small flint lock ..\$396.37**

Kentucky Pistols
are frequently offered for sale,
on our web site, at
www.trackofthewolf.com

Kentucky Pistol stock, small Siler lock inlet:

Select 13/16" or 7/8" barrel up to 10" length with muzzle cap. Cut for a small Siler lock. Plain maple, curly maple, walnut, or cherry.

- #Stk-KPS-13-M1 13/16", small Siler, maple, plain **only \$70.00**
- #Stk-KPS-13-M3 13/16", small Siler, maple, curly **only \$95.00**
- #Stk-KPS-13-W1 13/16", small Siler, black walnut **only \$80.00**
- #Stk-KPS-13-C1 13/16", small Siler, cherry **only \$80.00**
- #Stk-KPS-14-M1 7/8", small Siler, maple, plain **only \$70.00**
- #Stk-KPS-14-M3 7/8", small Siler, maple, curly **only \$95.00**
- #Stk-KPS-14-W1 7/8", small Siler, black walnut **only \$80.00**
- #Stk-KPS-14-C1 7/8", small Siler, cherry **only \$80.00**

Kentucky Pistol stock, L & R Bailes lock inlet:

Select 13/16" or 7/8" barrel up to 10" length with muzzle cap. Cut for a L&R Bailes lock. Plain maple, curly maple, walnut, or cherry.

- #Stk-KPL-13-M1 13/16", L&R Bailes, maple, plain **only \$70.00**
- #Stk-KPL-13-M3 13/16", L&R Bailes, maple, curly **only \$95.00**
- #Stk-KPL-13-W1 13/16", L&R Bailes, black walnut **only \$80.00**
- #Stk-KPL-13-C1 13/16", L&R Bailes, cherry **only \$80.00**
- #Stk-KPL-14-M1 7/8", L&R Bailes, maple, plain **only \$70.00**
- #Stk-KPL-14-M3 7/8", L&R Bailes, maple, curly **only \$95.00**
- #Stk-KPL-14-W1 7/8", L&R Bailes, black walnut **only \$80.00**
- #Stk-KPL-14-C1 7/8", L&R Bailes, cherry **only \$80.00**